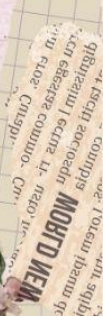


Programme





Aira Reikai



Alice Fennell



Amanda Mangara



**Amina Zebiri-
Heffernan**
1090-3498-0209



Amy Weston
2290-6724-0287



Anna Carcelli
0059-7838-3435



Anna Mary Gray
0058-6723-2164



Benedetta Talotta
5413-6725-7798



Beren Rojin



Elizabeth Brameld



Eliah Capsalis
3891-5612-9108



Grace Horler



Hanako Rose
5496-8944-8559



Jessica Clews
9816-8945-3106



Keira Kowalkowski
3337-9053-3160



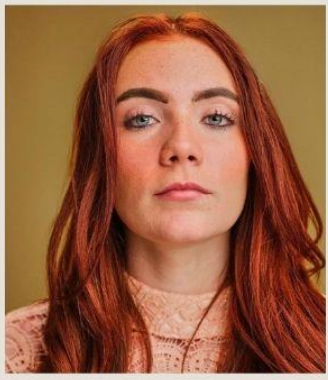
**Madeleine
Schafer Jones**



Mafalda Quintas



Mia Rose Emery
2290-6728-8353



Nicole Burns
5493-5614-3328



Owen C. Marshall
8695-3493-5849



Peter Humphrey
1171-3494-3724



Shana Horwood
1170-1272-7935



Tallulah Cass
8538-8949-1125



Thom Wyn



Vinski Salo



Yuki Matsumoto
5571-1279-9319

Thank You Sir Lence

From More than Skin Deep, directed by Ben
Samuels

Written by Mary Puzey, Madeliene Schafer
Jones

Performed by the company



Interrogation

From More than Skin Deep, directed by Ben
Samuels

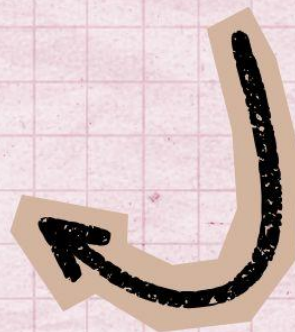
Performed by the Company

Featuring Anna Carcelli, Talullah Cass,
Elizabeth Brammeld, Owen C. Marshall



Your Mum

Created and Directed by Grace Horler
Performed by the Company



Maid Scene



From The Same Old Fashion

Written by Keira Kowalkowski and
Madeleine Schafer Jones

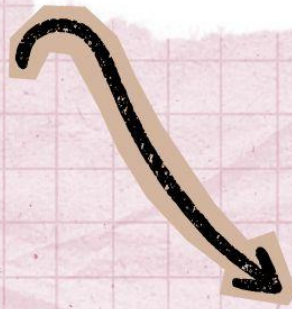
Performed by Keira Kowalkowski, Nicole
Burns, Vinski Salo

Bart's Last Song

From Mr Burns by Anne Washburn,
directed by Andre Pink

Performed by the Company

Featuring Amy Weston and
Owen C. Marshall



Ballerina Song

From The Same Old Fashion

Written and Composed by

Mary Puzey

Performed by Benedetta
Talotta and the Company



Commedia Dell'Arte Part 1

Performed by Benedetta
Talotta, Elisha Capsalis, Hanako
Rose, Jessica Clews, Madeleine
Schafer Jones, Peter
Humphrey, Thom Wyn, Yuki
Matsumoto



The Tavern Song

From Is That What You Call
Entertainment?

Written by Owen C. Marshall
and Amina Zebiri Heffernan
Performed by Alice Fennell,
Amina Zebiri, Anna Carcelli,
Anna Mary Gray, Beren Rojin,
Grace Horler and Owen C
Marshall



Yerma

By Lorca, directed by Montserrat Gili

Performed by Mia Rose Emery

Thom Wyn



Call Came on the Radio

From Mr Burns by Anne Washburn, directed by Andre Pink

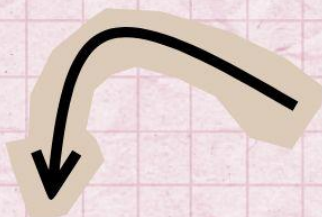
Choreographed by Alice Fennell, Anna Mary Gray, Nicole Burns and Talullah Cass

Performed by the Company

featuring Amina Zebiri

Heffernan, Jessica Clews,

Nicole Burns

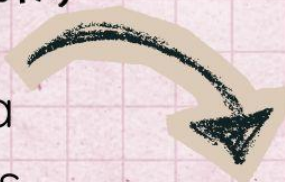


Mr Burns

From Mr Burns by Anne Washburn, directed by Andre Pink

Performed by Benedetta

Talotta and Talullah Cass



PURRAPADU

kathakali

Arranged by Dr Janaki S Nair

Performed by Alice Fennell,

Amy Weston, Anna Carcelli,

Anna Mary Gray, Aria Reikai,

Grace Horler and Talullah

Cass

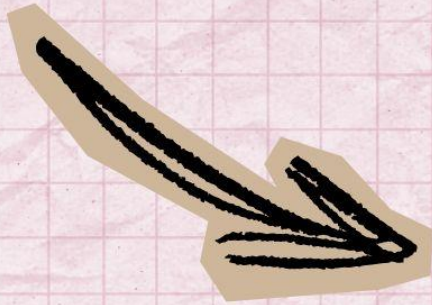


Pendet

Balinese Dance Drama

Arranged by Margaret J
Coldiron

Performed by Amy Weston,
Benedetta Talotta, Elisha
Capsalis, Grace Horler,
Hanako Rose, Madeleine
Schafer Jones, Nicole Burns



Robbers Scene Part 1

From what a Train wreck!

Written and performed by
Elizabeth Brammeld, Mia Rose
Emery and Shana Horwood,
accompanied by Amy Weston

Mr Burns

From Mr Burns by Anne Washburn,
directed by Andre Pink

Performed by Jessica Clews,
Keira Kowalkowski, Nicole
Burns and Yuki Matsumoto



Commedia Dell'Arte Part 2

Lab

From *Love and Information* by Carol Churchill, directed by Stephen Atkins.

Created by Mia Rose Emery, Tallulah Cass, Amy Weston, Hanako Rose, and Katie Rush

Performed by the Company, featuring Mafalda Quintas and Jessica Clews
With puppetry by Keira Kowalkowski



Pacha Mama

Inspired and created for Border Crossings anniversary celebrations

Choreographed by Talullah Cass

Performed by Amy Weston, Aira Reikai, Jessica Clews, Hanako Rose
Keira Kowalkowski, Nicole Burns, Talullah Cas, Yuki Matsumoto,



Lines in the Sand

Inspired and created for Border Crossings anniversary celebrations

Devised by Alice Fennell, Amina Zebiri Heffernan, Anna Mary Gray, Beren Rojin

Performed by Alice Fennell, Amina Zebiri, Anna Mary Gray, Beren Rojin, Grace Horler and Benedetta Talotta

With poetry by Mahmoud Darwish



A La Nanita

From Yerma By Lorca, directed by
Montserrat Gili

Arranged by Mary Puzey

Performed by the Company

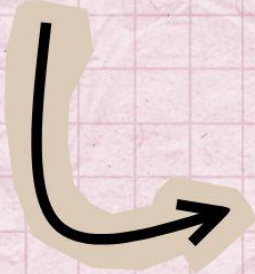


Ritual

From More than Skin Deep, directed by Ben
Samuels

Arranged by Benedetta Talotta,
Madeleine Schafer Jones, Mary Puzey
Choreographed by Alice Fennell, Anna
Carcelli, Grace Horler

Performed by the Company



Drum-off

Performed by Owen C. Marshall,
Thom Wyn, Yuki Matsumoto with
singing by Hanako Rose



Capoeira

Performed by Anna Carcelli
and Thom Wyn, with singing
by Mafalda Quintas and the
Company



Shif Song

From The Same Old Fashion

Composed by Mary Puzey

Lyrics by Madeleine Schafer Jones

Performed by Keira Kowalkowski
and Madeleine Schafer Jones, with
the Company



California Dreaming

By John and Michelle Phillips

Sung by Keira Kowalkowski,

with Amanda Mangara,

Madeleine Schafer Jones and

Nicole Burns

accompanied by Amy Weston

Choreographed and

performed by Alice Fennell,

Anna Carcelli and Anna Mary

Gray



Commedia Dell'Arte Part 3

News Report

From Is that what you Call
Entertainment?

Written by Amina Zebiri

Heffernan, Grace Horler, Tyler

Beckles, Owen C Marshall and

Victoria Penn

Performed by Amina Zebiri

Heffernan, Grace Horler and

Owen C. Marshall



Robbers Scene Part 2

From what a Train wreck!

Performed and Written by

Elizabeth Brammeld, Mia Rose

Emery and Shana Horwood,

accompanied by Amy Weston



'Pornomental Band'

From *Pornomental*, Directed by
Andrew Mcpherson

Composed by Jessica Clews

Performed by Amy Weston,
Beren Rojin, Jessica Clews,
Madeleine Schafer Jones,
Nicole Burns, Amina Zebiri
Heffernan, Shana Horwood,
Thom Wyn, Amanda Mangara



Spoken Word

From *Spring Awakening* by Frank
Wedekind, Directed by Ramiro
Silveira

Adapted by Heidi Oatly
Performed by Vinski Salo and
Peter Humphrey

'Tis the Last Rose of Summer

Lyrics by Thomas Moore, arranged
by Thomas Britten

Performed by Jessica Clews



Springfield Duet

From *Mr Burns* by Anne Washburn,
directed by Andre Pink

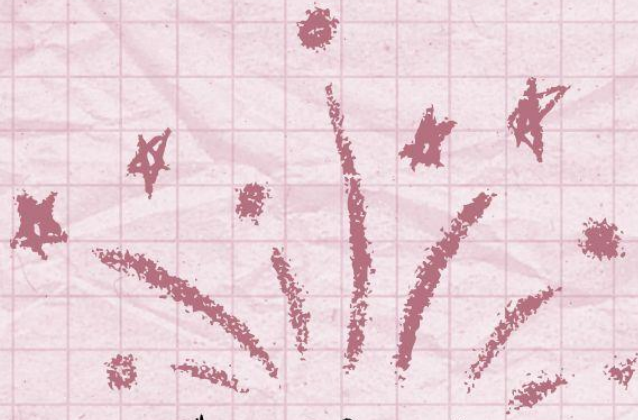
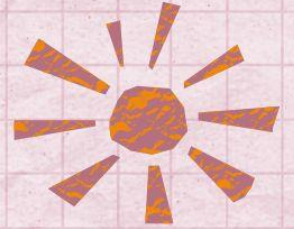
Performed by Aira Reikai and
Hanako Owen

OUR PURPOSE

From *Is that what you Call
Entertainment?*

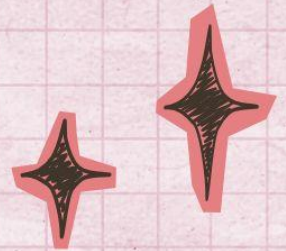
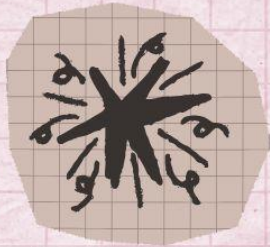
Written by Alice Fennell, Anna
Mary Gray, Beren Rojin and
Owen C. Marshall
Performed by the Company





The Finale

Performed by the
company



Featuring Anna Mary Gray, Beren
Rojin, Elizabeth Brammeld,
Hanako Owen, Jessica Clews, Mia
Emery and Nicole Burns

Supported by

Amina Zebiri Heffernan, Aira
Reikai, Beren Rojin, Jessica Clews,
Mafalda Quintas, Vinski Salo, Yuki
Matsumoto, Owen C. Marshall,
Madeleine Schafer Jones



THE END

The Band



Drums - Thom Wyn

Keys - Amy Weston / Jessica Clews

Bass - Owen C. Marshall/Jessica Clews

Guitar - Owen C Marshall

Violin - Shana Horwood,
Madeleine Schafer Jones

Djun Djun - Beren Rojin, Amina Zebiri Heffernan, Yuki Matsumoto

Tambourine - Nicole Burns

Shaker - Amanda Mangara



Directed by Ramiro Silveira



Director's Assistants

Aria Reikai, Eliah Capsalis, Grace Horler, Hanako Rose, Mafalda Quintas

Stage Manager

Heidi Oatley

Marketing

Anna Carcelli, Anna Mary Gray, Peter Humphrey



With thanks to

Dr Janaki Nair

Margaret Coldiron (Jiggs)

Mestre Velho Jose

