

EAST 15 ACTING SCHOOL PRESENTS

WORLDS APART
FROM BA WORLD PERFORMANCE
DEvised BY THE COMPANIES

12 MAY - 14 MAY (INC. MATINEE)
CLIFFTOWN THEATRE, SOUTHEND

A unique collection of three brand new one-act plays, drawing upon theatre styles from across the globe, presented as a spectacular triple bill.

TICKETS AND INFORMATION:
EAST15.AC.UK

EAST 15
ACTING SCHOOL



CLIFFTOWN THEATRE
NELSON STREET | SOUTHEND-ON-SEA | ESSEX | SS1 1EF
01702 328335 | www.clifftowntheatre.co.uk

BA WORLD PERFORMANCE PRESENTS

WORLDS APART

DEvised BY THE COMPANIES

TUTORED BY RAMIRO SILVEIRA, STEFFANY GEORGE & ADRIAN JAMES

A unique collection of three brand new one-act plays, drawing upon theatre styles from across the globe, presented as a spectacular triple bill.



RUNNING TIME:

120mins long, including a 15min interval between each one-act play.

CONTENT WARNING:

Contains haze, smoking, strobe lighting, incense burning, scenes of a violent nature, simulated violence, scenes of a sexual nature, simulated sex, themes of death/suicide/self-harm, needles and simulated injections, strong language, and partial nudity. Age advisory: 16+

_CONCEPT_PENDING_

An Artist, suffering from creative block, accidentally summons the muses who take them on a journey of enlightenment.

A modern retelling of the nine Greek muses and a love letter to the creative arts in this post pandemic world.

Please Note: This production contains strong language, scenes of a violent/sexual nature, simulated sex/violence, smoking, strobe lighting, partial nudity

CREW

CREATIVE TEAM

Tutor	Adrian James
Devised by	Four Snails Theatre
Director	Holly Hopkins
Assistant Directors	Lucin Burnham Anna Armitage
Movement Director	Vincent Lockwood
Lighting Design	Steven Owens
Sound Design	Maya Ross
Set Design	Carlos Moral Reis
Set Design Coordinator	Vincent Lockwood
Costume Design	Maira Bondre
Costume Tutor	Laura Trevail
Marketing & Publicity	Holly Hopkins
Trailer Editor & Director	Vincent Lockwood

TECHNICAL TEAM

Production Manager	Steven Owens
Stage Managers & Props	Charlotte Windley Maya Ross
Wardrobe Supervisor	Alison Manners
Wardrobe Assistant	Andrea Wingrove-Dunn
Set Construction	Carlos Moral Reis
Head of Course	Ramiro Silveira
Movement Tutor	Steffany George
Voice Tutor	Morag Stark

CAST

IN ALPHABETICAL ORDER



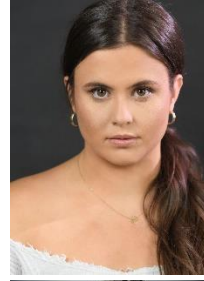
**JASMINE
ALI**

Astronomy



**ALEX
ÁLVAREZ**

The Artist



**MAIRA
BONDRE**

Love



**LUCIN
BURNHAM**

Heroic



**DENISE
ELENE**

Tragedy



**HELGA
HENSON**

Hymns



**HOLLY
HOPKINS**

History



**VINCENT
LOCKWOOD**

Comedy



LILY MAHER

Music



MAYA ROSS

Dance

A NOTE FROM THE COMPANY

We at Four Snails have found that our show and our process have been intertwined completely: us in the Artist's shoes, but without the divine intervention of magical Muses. What we have learnt, however, is that in a creative process you must be your own Muse. We hope you enjoy the show and encourage you to continue pursuing creative endeavours in your own life, whatever they may be.

SPECIAL THANKS

Margaret 'Jiggs' Coldiron

THE KINSHIP

When you're abandoned within a vacuum of answers, the only truth left is the truth you're told. When blind belief is all you have, what choices can you make? Curiosity is not a sin; it leads to sin.

Please Note: This production contains strobe lighting, incense burning, simulated violence, sexual content and strong language.

CREW

CREATIVE TEAM

Tutor	Ramiro Silveira
Devised by	Monkey Stepladder Theatre
Directors	Cassie Bunton Sophie Lynch
Lighting Design	Cassie Bunton Sophie Lynch
Sound Design and Composer	Hannah Wengård
Movement Director	Joseph Brookes
Assistant Movement Directors	Sophie Lynch Izzy Rooks
Set Design	Megan Rebecca
Costume Design	Autumn Challoner Jones Megan Rebecca
Costume Tutor	Laura Trevail
Marketing & Publicity	Joseph Brookes Cassie Bunton Melissa Powell
Photography	Hannah Wengård

TECHNICAL TEAM

Production Managers	Steven Owens Chloe Davis
Stage Managers & Props	Charlotte Windley Lily Downes
Assistant Stage Manager	Megan Rebecca
Wardrobe Supervisor	Alison Manners
Wardrobe Assistant	Andrea Wingrove-Dunn
Set Construction	Carlos Moral Reis
Head of Course	Ramiro Silveira
Voice Tutor	Morag Stark
Movement Tutor	Steffany George

CAST

IN ALPHABETICAL ORDER



**JOSEPH
BROOKES**

Kindred
Quinn



**CASSIE
BUNTON**

Kindred
Reese



**AUTUMN
CHALLONER
JONES**

Kindred Kit



**CHLOE
DAVIS**

Kindred
Lennox



**LILY
DOWNES**

Kindred Hollis



**SOPHIE
LYNCH**

Kindred Wren



**MELISSA
POWELL**

Kindred Riven



**MEGAN
REBECCA**

Kindred
Florian



IZZY ROOKS

Kindred Avery



**HANNAH
WENGARD**

Kindred Jude

A NOTE FROM THE COMPANY

The concept of the Monkey Stepladder is an experiment where 5 monkeys were placed in a cage. Each time a monkey tried to climb the ladder in the cage, the experimenter sprayed all the monkeys with icy water. Eventually, each time a monkey started to climb the ladder; the other ones pulled him off so they could avoid the icy spray. Over time, even though all monkeys had been replaced, they continued to avoid the stepladder even though they didn't know why. What will spur you to question tradition and what does it leave you with?

SPECIAL THANKS

With special thanks to Margaret 'Jiggs' Coldiron, Ted Groves, Ellie Begley, Reverend Cherry and Ariel Company Theatre

CAST

IN ALPHABETICAL ORDER



**ISADORA
BACCON**

Faye



**ALEXANDER
BRACKENBURY**

Lock Keeper



**NOLWENN
COLE**

Self 2



**LACEY
FEARON**

Trixie



**KORNELIA
FRAKALA**

Self 1



**OLIVER
MARGOLIS**

Self 4



**SAGE
PEARCE**

Serenity |
Self 3



**FERNANDA
PEDROSO**

Daisy



**ISABELLE
SKINNER**

Pebbles

A NOTE FROM THE COMPANY

Inspired by Richard Schwartz's 'Internal Family Systems Therapy', *Trailheads Theatre Company* was formed through our collective interest in fears and trauma, how they're created and the ways in which it unites us as humans. We have enjoyed exploring facing the challenges of understanding and exploring how to create a piece surrounding this complex subject and are excited to bring you into this beloved world of the fairies.

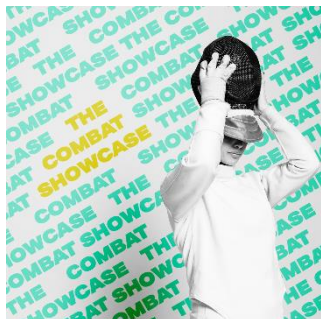
Through this show we hope to create a fantastical exploration of the mind, through touching, comedic and thought-provoking moments, that we hope will leave you questioning; if you had the chance, would you really get rid of all your fears?

SPECIAL THANKS

Margaret 'Jiggs' Coldiron and Ellie Begley

STILL TO COME THIS SEASON

FULL SHOW INFO AND TICKETS AVAILABLE AT
WWW.CLIFFTOWNTHEATRE.CO.UK



THE COMBAT SHOWCASE

19-21 May, 7:30pm (2:30pm Saturday matinee)
Livestream, 20 May

An action packed two hours of electrifying stage combat skills, featuring thrilling scenes from much loved dramas



LET THE RIGHT ONE IN

26-28 May, 7:30pm (2:30pm Saturday matinee)

A dark and visceral coming-of-age love story, based on the acclaimed novel and film



CONTENT.

30 May, 7:30pm
Livestream, 30 May

Doing everything but acting! BA Creative Producing present an evening of digital media, design, and four world premiere films.



ACT LOCALLY

10 Jun, 7:30pm | 11 Jun, 5:00pm

Three original one-act plays, created and performed with participants from our Southend community.

